

H · A · N · S · U · K



BARO BARO
(Cold-patch for road repairing)



DESCRIPTION

BaroBaro is high-quality, polymer-modified cold asphalt repair material that repairs pot holes and cracks on roads, bridges, parking lots, driveways and other asphalt and concrete surfaces. This product can be applied under any temperature and weather

ADVANTAGE

- Simple compacting
- No need of tack coat for priming
- No matters with water or rain
- 2 types (Winter & Summer)
- Slow setting inside
- Bonding well to substrate



Fast Traffic Open

All Weather Workability

Longer Durability

APPLICATION

Pot-hole



Restoration after
Utilities works



Bridge Joint Parts



Around Manhole



Entrance of factory, etc.



PROPERTIES

Test Item	Unit	Result	Standard	Test Method
Stability	N	3,655	Over 2,500	KS F 2369:2008
Porosity	%	11.8	3-15	
Flow test	1/10mm	38	20-40	
Water immersion retained stability	%	85	Over 75	

PACKING AND USING QUANTITY

- Packing: 25kg/bag
- Using Quantity

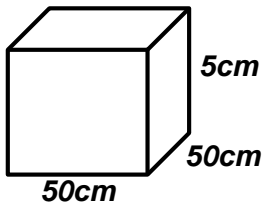
Using quantity formulation:

$$\frac{\text{Pot hole Volume (Unit: CM)} \times \text{Specific Gravity of Barobaro(2)}}{1,000}$$



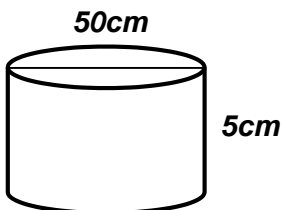
Using Quantity
(Unit: KG)

Ex. 1



$$\frac{50\text{cm} \times 50\text{cm} \times 5\text{cm} \times 2}{1,000} = 25 \text{ KG}$$

Ex. 2



$$\frac{25\text{cm} \times 25\text{cm} \times 3.14\text{cm} \times 5\text{cm} \times 2}{1,000} = 19.6 \text{ KG}$$

WORKING PROCEDURE

1. Cleaning Substrates



- Soil & dust have to be removed perfectly
- **No matters with water or rain**
- In case of water in pothole, there should be no sand or soil sunk

2. Pouring Baro-Baro



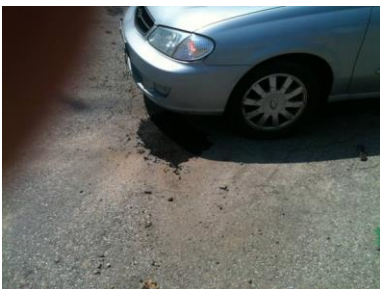
- Pour 10mm higher than road surface

3. Compacting



- **Compact with Shovels ONLY**
- No hand-compacting machine required
- Traffic passing on makes perfect compacting

4. Open Traffic



- Traffic passing on makes perfect compacting

Contact information

- Name : SangWoo Alex Kim / Managing Director
- E-mail : md@hankookkorea.com, aswkim77@gmail.com
- Phone no. +82 1035885413 (Ko) /+91 7299001600(In)